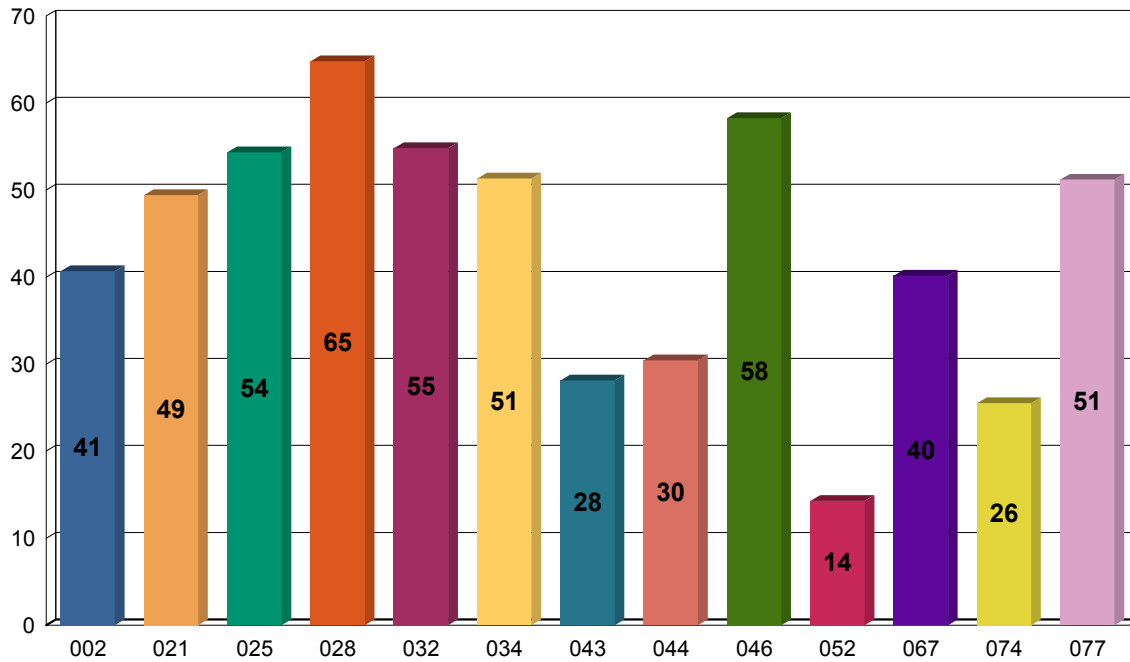


# GUJARAT TECHNOLOGICAL UNIVERSITY (BE II-SEM JUNE-10)

## INSTITUTE WISE RESULT ZONE WISE

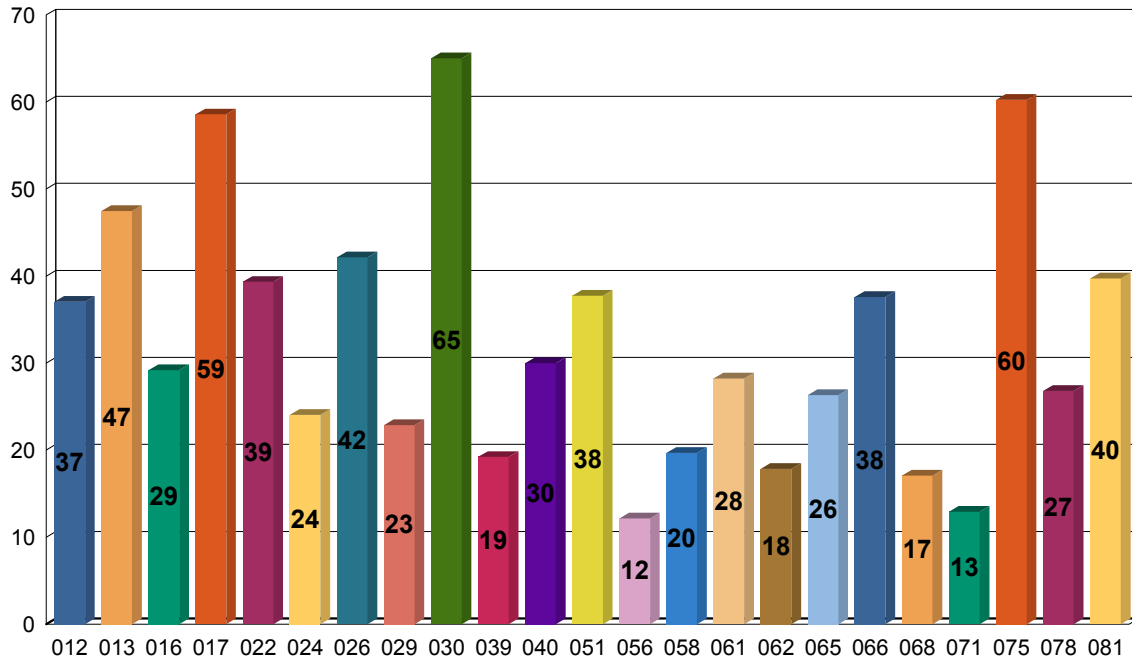
### AHMEDABAD



INST CODE / NAME	TOT AL	PASS	FAIL	PER
028 L. D. ENGINEERING COLLEGE , AHMEDABAD	1199	777	422	64.80
046 UNIVERSAL COLLEGE OF ENGINEERING AND TECHNOLOGY, GANDHINAGAR	302	176	126	58.28
032 L. J. INSTITUTE OF ENGINEERING AND TECHNOLOGY, AHMEDABAD	321	176	145	54.83
025 INDUS INSTITUTE OF ENGINEERING & TECHNOLOGY, AHMEDABAD	427	232	195	54.33
034 NARNARAYAN SHASTRI INSTITUTE OF TECHNOLOGY, JETALPUR	304	156	148	51.32
077 SILVER OAK COLLEGE OF ENGG., & TECH., AHMEDABAD	250	128	122	51.20
021 GOVERNMENT ENGINEERING COLLEGE, BHAVNAGAR	530	262	268	49.43
002 AHMEDABAD INSTITUTE OF TECHNOLOGY, AHMEDABAD	376	153	223	40.69
067 SAL INSTITUTE OF TECH. & ENGG. RESEARCH, AHMEDABAD	249	100	149	40.16
044 SHRI C. U. SHAH COLLEGE OF ENGINEERING & TECHNOLOGY, WADHWAN	401	122	279	30.42
043 SHANTILAL SHAH ENGINEERING COLLEGE , BHAVNAGAR	757	213	544	28.14
074 SEMI FINANCED DEGREE ENGINEERING COLLEGE, SURENDRANAGAR	235	60	175	25.53
052 CENTRAL INSTITUE OF PLASTICS ENGG. & TECH., VATVA, AHMEDABAD	28	4	24	14.29

**INSTITUTE WISE RESULT ZONE WISE**

**GANDHINAGAR**



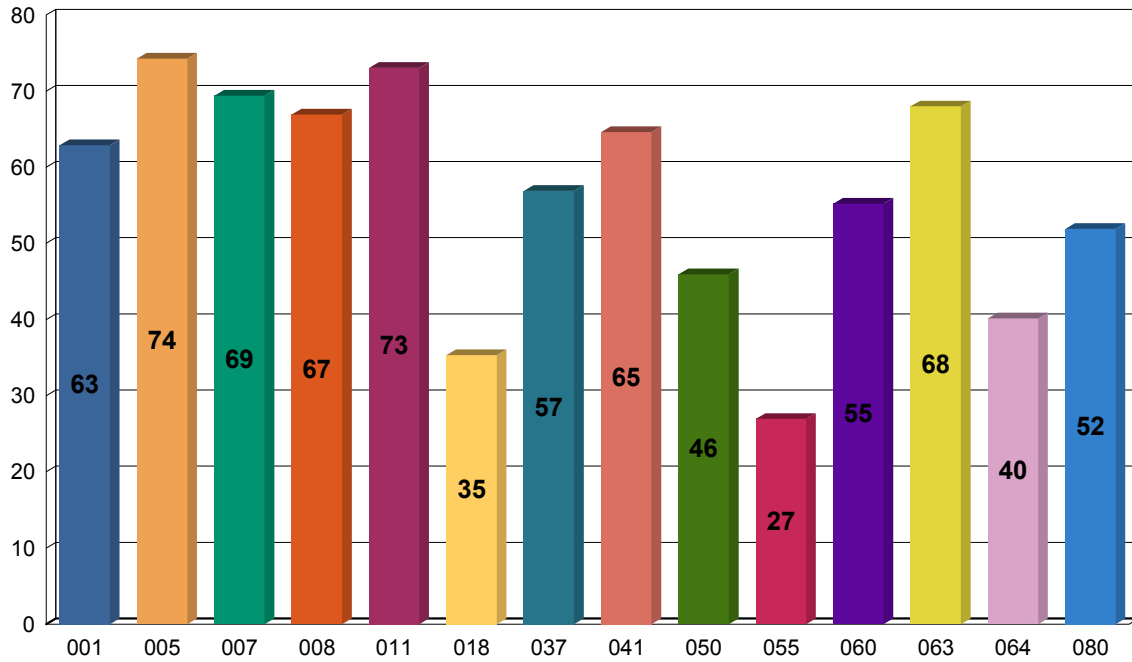
INST CODE / NAME	TOT AL	PASS	FAIL	PER
030 L. D. R. P. INSTITUTE OF TECHNOLOGY, GANDHINAGAR	452	294	158	65.04
075 SHANKERSINH VAGHELA BAPU INSTITUTE OF TECH., UNAVA, GANDHINAGAR	229	138	91	60.26
017 GOVERNMENT ENGINEERING COLLEGE, CHANDKHEDA	746	437	309	58.58
013 GOVERNMENT ENGINEERING COLLEGE, GANDHINAGAR	651	309	342	47.47
026 KALOL INSTITUTE OF TECHNOLOGY, KALOL	344	145	199	42.15
081 VENUS INTERNATIONAL COLLEGE OF TECH., BHOYAN RATHOD, GANDHINAGAR	229	91	138	39.74
022 GOVERNMENT ENGINEERING COLLEGE, PATAN	483	190	293	39.34
051 ALPHA COLLEGE OF ENGG. & TECH., KHATRAJ, KALOL	249	94	155	37.75
066 SABAR INSTITUTE OF TECH. FOR GIRLS, TAJPUR, SABARKANTHA	327	123	204	37.61
012 GANDHINAGAR INSTITUTE OF TECHNOLOGY, GANDHINAGAR	432	160	272	37.04
040 SANKALCHAND PATEL COLLEGE OF ENGINEERING, VISNAGAR	430	129	301	30.00
016 GOVERNMENT ENGINEERING COLLEGE, MODASA	781	228	553	29.19
061 GOVERNMENT ENGG. COLLEGE, PALANPUR	170	48	122	28.24
078 SMT. S.R. PATEL ENGG. COLLEGE, DABHI, UNJHA	235	63	172	26.81
065 MERCHANT ENGG. COLLEGE, BASNA. VISNAGAR	228	60	168	26.32

**INSTITUTE WISE RESULT ZONE WISE**

024	HASMUKH GOSWAMI COLLEGE OF ENGINEERING, VAHELAL	341	82	259	24.05
029	L. C. INSTITUTE OF TECHNOLOGY. BHANDU	293	67	226	22.87
058	FACULTY OF ENGG., SHREE SARASWATI EDU. SANSTHAN GROUP OF INSTITUTIONS, RAJPUR, KADI	239	47	192	19.67
039	S. P. B. PATEL ENGINEERING COLLEGE, MEHSANA	333	64	269	19.22
062	GUJARAT INSTITUTE OF TECHNICAL STUDIES, MOYAD, PRANTIJ	230	41	189	17.83
068	SARDAR PATEL INSTITUTE OF TECH., PILUDARA, MEHSANA	246	42	204	17.07
071	SEMI FINANCED DEGREE ENGINEERING COLLEGE, MEHSANA(VADNAGAR)	178	23	155	12.92
056	FACULTY OF ENGG., GROW MORE FOUNDATION GROUP OF INSTITUTIONS, BERNA, HIMMATNAGAR	247	30	217	12.15

**INSTITUTE WISE RESULT ZONE WISE**

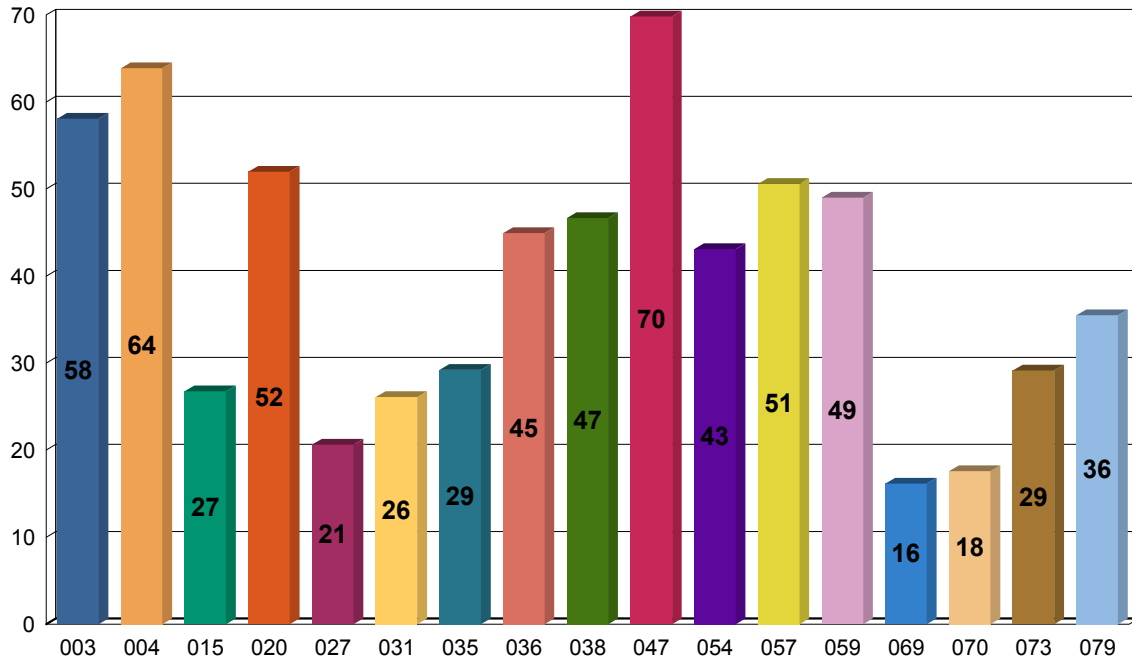
**V.V. NAGAR**



INST CODE / NAME	TOT AL	PASS	FAIL	PER
005 BABARIA INSTITUTE OF TECHNOLOGY, VADODARA	385	286	99	74.29
011 G. H. PATEL COLLEGE OF ENGINEERING & TECHNOLOGY , V.V.NAGAR	449	328	121	73.05
007 BIRLA VISHVAKARMA MAHA VIDHYALAYA, V. V. NAGAR	484	336	148	69.42
063 INSTITUTE OF COMPUTER & COMMUNICATION TECHNOLOGY FOR WOMEN, NEW V.V.NAGAR	300	204	96	68.00
008 BIRLA VISHVAKARMA MAHA VIDHYALAYA, V. V. NAGAR	130	87	43	66.92
041 SARDAR VALLABBHAI PATEL INSTITUTE OF TECHNOLOGY, VASAD	616	398	218	64.61
001 A. D. PATEL INSTITUTE OF TECHNOLOGY, KARASAD	426	268	158	62.91
037 PARUL INSTITUTE OF ENGINEERING AND TECHNOLOGY, WAGHODIA	617	351	266	56.89
060 GOVERNMENT ENGG. COLLEGE, GODHRA	192	106	86	55.21
080 VADODARA INSTITUTE OF ENGG., KOTAMBI, WAGHODIYA	237	123	114	51.90
050 SIGMA INSTITUTE OF ENGINEERING, WAGHODIA	270	124	146	45.93
064 K.J. INSTITUTE OF ENGG. AND TECH., SAVALI	244	98	146	40.16
018 GOVERNMENT ENGINEERING COLLEGE, DAHOD	413	146	267	35.35
055 ENGGINERING COLLEGE, TUWA, GODHARA	230	62	168	26.96

**INSTITUTE WISE RESULT ZONE WISE**

**RAJKOT**



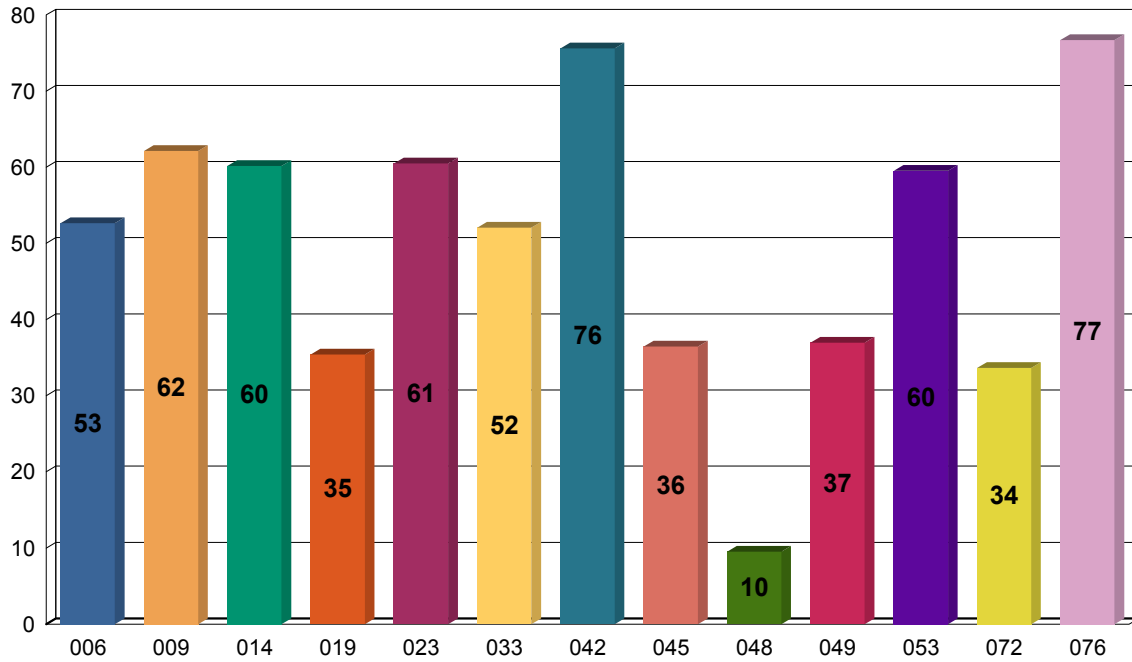
INST CODE / NAME	TOT AL	PASS	FAIL	PER
047 V. V. P. ENGINEERING COLLEGE, RAJKOT	451	315	136	69.84
004 B. H. GARDI COLLEGE OF ENGINEERING & TECHNOLOGY, KALAWAD	277	177	100	63.90
003 ATMIYA INSTITUTE OF TECHNOLOGY & SCIENCE, RAJKOT	420	244	176	58.10
020 GOVERNMENT ENGINEERING COLLEGE ,RAJKOT	552	287	265	51.99
057 FACULTY OF ENGG., MARWADI EDU. FOUNDATION GROUP OF INSTITUTIONS, RAJKOT	249	126	123	50.60
059 G.K. BHARAD INSTITUTE OF ENGG., KASTURBA DHAM, RAJKOT	253	124	129	49.01
038 R. K. COLLEGE OF ENGINEERING AND TECHNOLOGY, RAJKOT	407	190	217	46.68
036 OM SHANTI ENGINEERING COLLEGE, RAJKOT	316	142	174	44.94
054 DARSHAN INSTITUTE OF ENGG. & TECH., RAJKOT-MORBI HIGHWAY, HADALA	246	106	140	43.09
079 TAKSHSHILA COLLEGE OF ENGG. & TECH., VILLAGE ISHWARIYA, RAJKOT	245	87	158	35.51
035 NOBEL ENGINEERING COLLEGE, JUNAGADH	301	88	213	29.24
073 SEMI FINANCED DEGREE ENGINEERING COLLEGE, PORBANDAR	223	65	158	29.15
015 GOVERNMENT ENGINEERING COLLEGE, BHUJ	523	140	383	26.77
031 L. E. COLLEGE , MORBI	640	167	473	26.09
027 KANKESHWARIDEVI INST OF TECHNOLOGY, JAMNAGAR	194	40	154	20.62

**INSTITUTE WISE RESULT ZONE WISE**

070	SEMI FINANCED DEGREE ENGINEERING COLLEGE, JAMNAGAR	233	41	192	17.60
069	SEMI FINANCED DEGREE ENGINEERING COLLEGE, AMRELI	198	32	166	16.16

**INSTITUTE WISE RESULT ZONE WISE**

**SURAT**



INST CODE / NAME	TOT AL	PASS	FAIL	PER
076 SHRI SWAMI ATMANAND SARASWATI INSTITUTE OF TECH., SURAT	249	191	58	76.71
042 SARVJANIK COLLEGE OF ENGINEERING & TECHNOLOGY, SURAT	447	338	109	75.62
009 C. K. PITHAWALA COLLEGE OF ENGINEERING & TECHNOLOGY, SURAT	346	215	131	62.14
023 GOVERNMENT ENGINEERING COLLEGE, SURAT	595	360	235	60.50
014 GOVERNMENT ENGINEERING COLLEGE, BHARUCH	457	275	182	60.18
053 CHHOTUBHAI GOPALBHAI PATEL INSTITUTE OF TECH., TARSADI, BARDOLI	220	131	89	59.55
006 BHAGWAN MAHAVIR COLLEGE OF ENGINEERING AND TECHNOLOGY, SURAT	302	159	143	52.65
033 MAHATAMA GANDHI INST. OF TECH., EDUCATION & RESEARCH, NAVASARI	338	176	162	52.07
049 VIDHYABHARTI TRUST INST. OF TECHNOLOGY & RESEARCH, BARDOLI	311	115	196	36.98
045 SHRI SADVIDHYAMANDAL INSTITUTE OF TECHNOLOGY, BHARUCH	332	121	211	36.45
019 GOVERNMENT ENGINEERING COLLEGE, VALSAD	336	119	217	35.42
072 SEMI FINANCED DEGREE ENGINEERING COLLEGE, NAVSARI	211	71	140	33.65
048 VALIA INSTITUTE OF TECHNOLOGY, BHARUCH	252	24	228	9.52