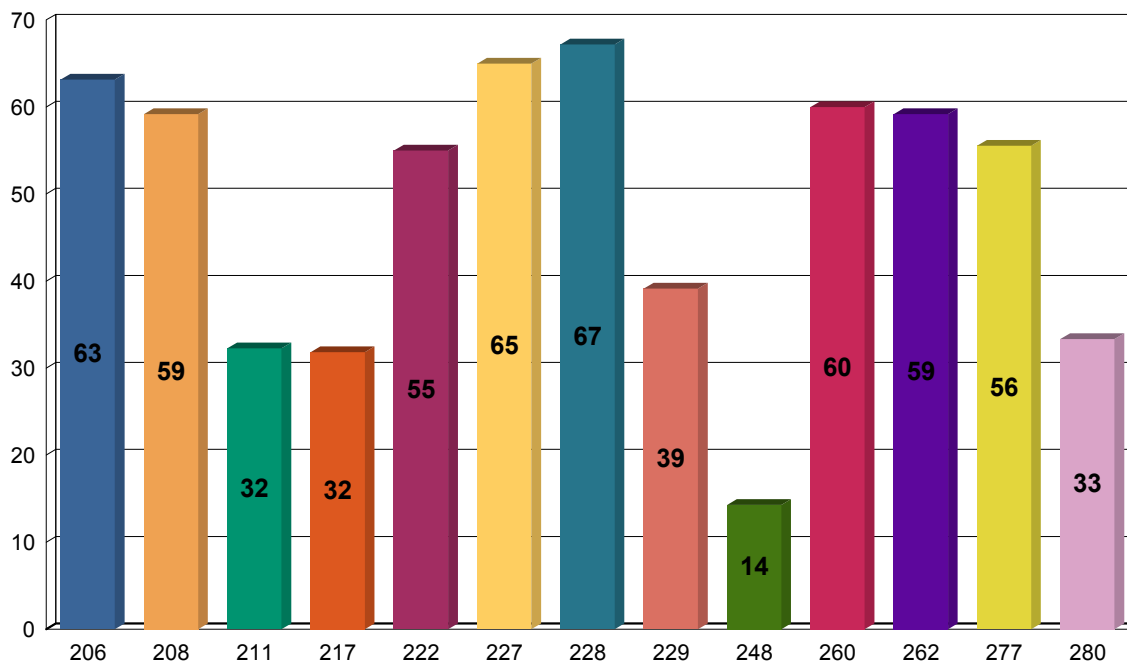


**INSTITUTE WISE RESULT ZONE WISE**

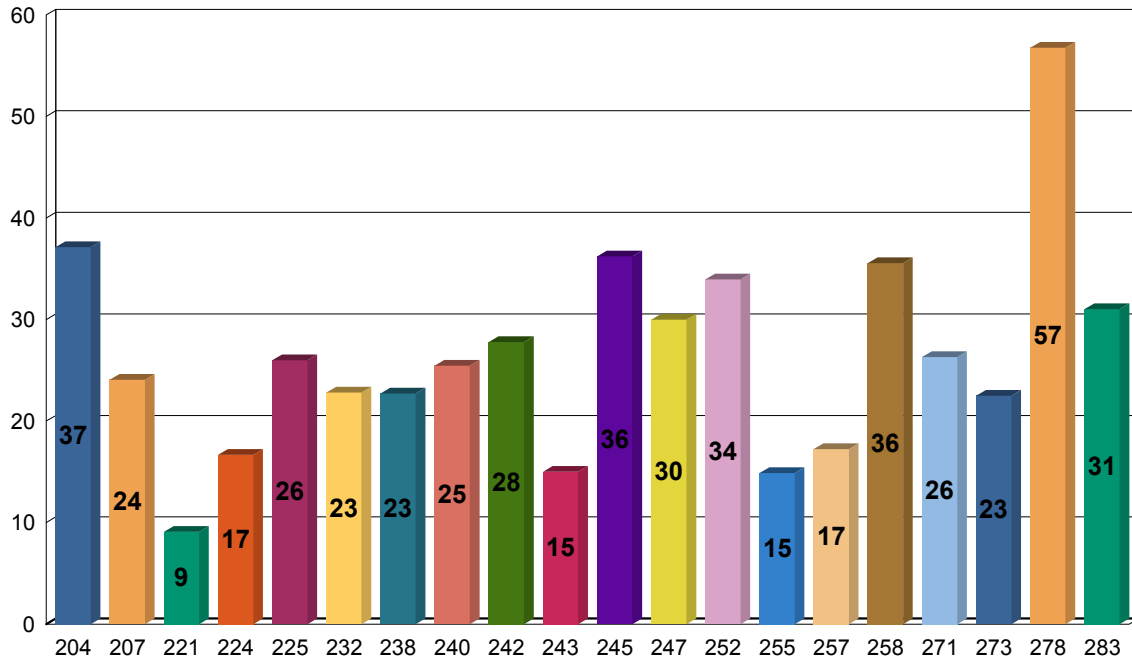
**AHMEDABAD**



INST CODE / NAME	TOT AL	PASS	FAIL	PER
228 L. M. College Of Pharmacy, Ahmedabad	64	43	21	67.19
227 L. J. Institute Of Pharmacy, Sanand	60	39	21	65.00
206 A-One Pharmacy College, Enasan	57	36	21	63.16
260 Shri Swaminarayan Sanskar Pharmacy College, Zundal	55	33	22	60.00
262 Smt Nilaben Manubhai Padalia Pharmacy College, Navapura	49	29	20	59.18
208 Arihant School Of Pharmacy, Uvarsad	49	29	20	59.18
277 SAL Institute Of Pharmacy, Ahmedabad	45	25	20	55.56
222 Hari Om Pharmacy College, Ambav	20	11	9	55.00
229 M. P. Patel College Of Pharmacy, Kapadwanj	23	9	14	39.13
280 Shree Savaram College Of Pharmaceutical Edu. & Res., Malvan, Surendranagar	15	5	10	33.33
211 Avantika Education Trust B.Pharmacy College, Navalgad	31	10	21	32.26
217 C. U. Shah Pharmacy College, Wadhwan	44	14	30	31.82
248 Shri T. S. Patel College Of Pharmacy, Ambaliyara	14	2	12	14.29

**INSTITUTE WISE RESULT ZONE WISE**

**GANDHINAGAR**



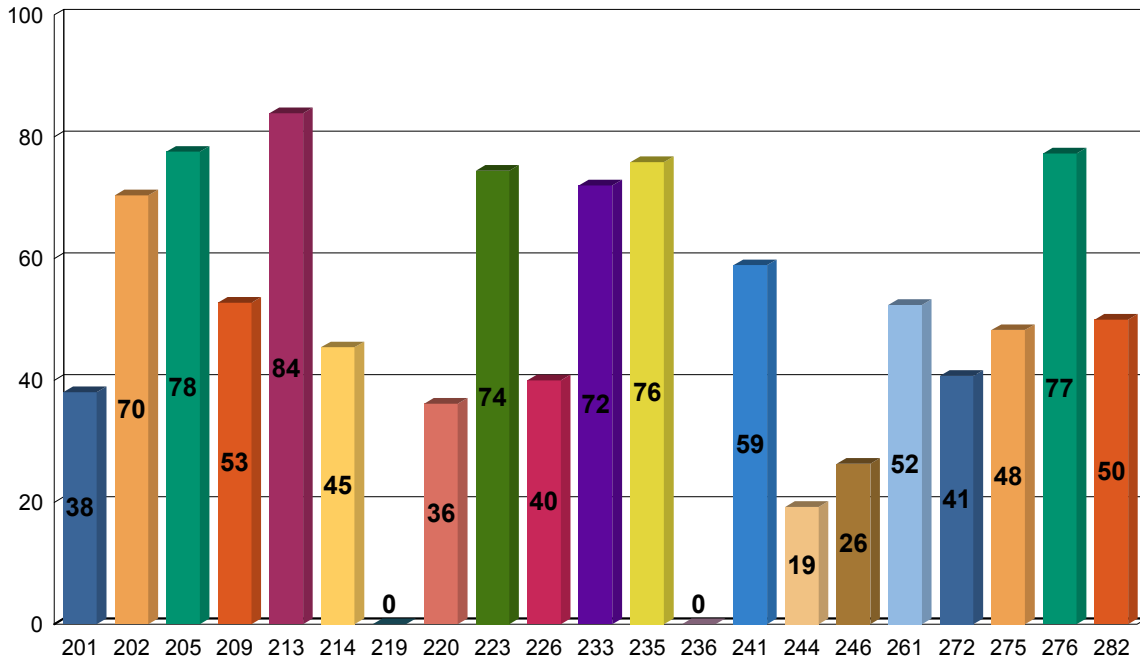
INST CODE / NAME	TOT AL	PASS	FAIL	PER
278 Shankarsinh Vaghela Bapu Institute Of Pharmacy, Unava, Gandhinagar	37	21	16	56.76
204 Amruta College Of Pharmacy Research Institute, Gandhinagar	35	13	22	37.14
245 Sarvjanik Pharmacy College, Mehsana	58	21	37	36.21
258 Shri Swaminarayan College Of Pharmacy, Kalol	45	16	29	35.56
252 Shri B. M. Shah College Of Pharmaceutical Education And Research, Modasa	53	18	35	33.96
283 Shree Mukundlal Vitthaldas Shah Pharmacy College, Gajan, Sabarkantha	29	9	20	31.03
247 Sharda School Of Pharmacy, Pethapur	30	9	21	30.00
242 Saraswati Institute Of Pharmaceutical Sciences, Chiloda	36	10	26	27.78
271 Chinmay Institute Of Pharmacy, Boru, Gandhinagar	19	5	14	26.32
225 Kalol Institute Of Pharmacy, Kalol	50	13	37	26.00
240 B. S. Patel Pharmacy College, Linch	55	14	41	25.45
207 APMC College Of Pharmacy, Himmatnagar	54	13	41	24.07
232 Nootan Pharmacy College, Visnagar	57	13	44	22.81
238 Radhe School Of Pharmacy, Hirpura	22	5	17	22.73
273 I. K. Patel College Of Pharmaceutical Edu. & Research, Himmatnagar	40	9	31	22.50
257 K. J. College Of Pharmacy, Vadasma	29	5	24	17.24

**INSTITUTE WISE RESULT ZONE WISE**

224	K. B. Raval College Of Pharmacy, Kasturinagar, Shertha	36	6	30	16.67
243	Saraswati School Of Pharmacy, Ranela	40	6	34	15.00
255	Shree Krishna Institute Of Pharmacy, Shankhalpur	47	7	40	14.89
221	Gitanjali Pharmacy College, Sabarkantha	11	1	10	9.09

**INSTITUTE WISE RESULT ZONE WISE**

**V.V. NAGAR**



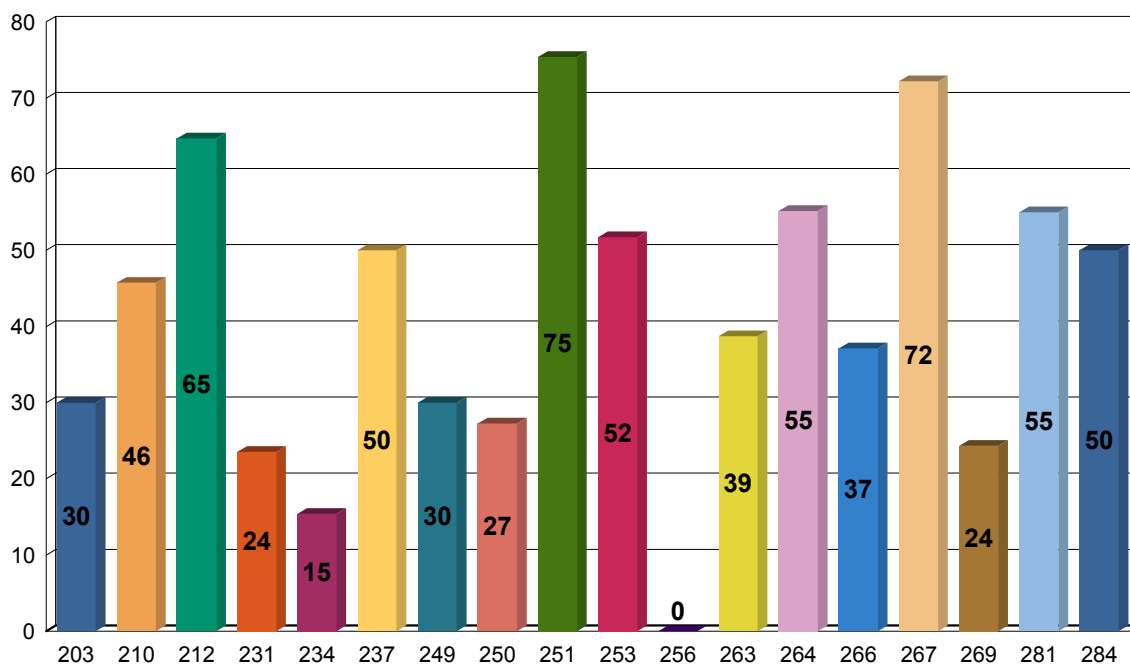
INST CODE / NAME	TOT AL	PASS	FAIL	PER
213 Babaria Institute Of Pharmacy, Varnama	62	52	10	83.87
205 Anand Pharmacy College, Anand	49	38	11	77.55
276 Sardar Patel College of Pharmacy, V V Nagar	22	17	5	77.27
235 Pioneer Pharmacy College, Sayajipura, Vadodara	58	44	14	75.86
223 Indukaka Ipcowala College Of Pharmacy, New V.V.Nagar	43	32	11	74.42
233 Parul Institute Of Pharmacy, Limda	50	36	14	72.00
202 A. R. College Of Pharmacy & G.H.P. Institute Of Pharmacy, V.V.Nagar	27	19	8	70.37
241 Dharmaj Degree Pharmacy College, Dharmaj	56	33	23	58.93
209 Atmiya Pharmacy College, Ankodia	36	19	17	52.78
261 Sigma Institute Of Pharmacy, Bakrol	42	22	20	52.38
282 Shivam Pharmaceutical Studies & Research Center, Valasan	26	13	13	50.00
275 R. H. Patel College Of Pharmacy, Dahemi, Anand	29	14	15	48.28
214 Baroda College Of Pharmacy, Limda	66	30	36	45.45
272 CVM Institute For Degree Course In Pharmacy, V V Nagar	27	11	16	40.74
226 L. B. Rao College Of Pharmaceutical Edu. And Res., Khambhat	40	16	24	40.00
201 A. R. College Of Pharmacy & G.H.P. Institute Of Pharmacy, V.V.Nagar	21	8	13	38.10
220 Degree Pharmacy College, Rampura	47	17	30	36.17

**INSTITUTE WISE RESULT ZONE WISE**

246	Sat Kaival College Of Pharmacy, Saarsa	38	10	28	26.32
244	Sardar Patel College of Pharmacy, Bakrol	26	5	21	19.23
236	Prashant Mittal Kansara Pharmcy College, Pipaliya	4	0	4	0.00
219	Degree Pharmacy College, Aniyad	14	0	14	0.00

## INSTITUTE WISE RESULT ZONE WISE

### RAJKOT



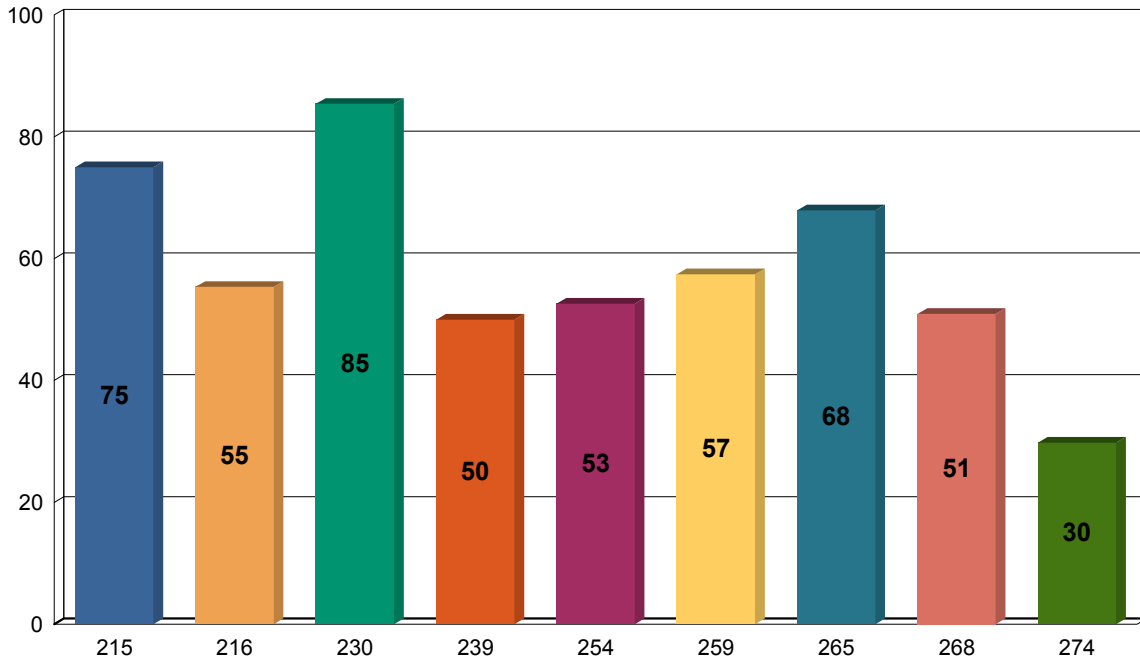
INST CODE / NAME	TOT AL	PASS	FAIL	PER
251 Shree Leuva Patel Trust Pharmacy Mahila College, Amreli	61	46	15	75.41
267 Veerayatan Institute Of Pharmacy, Jakhania	18	13	5	72.22
212 B. K. Modi Government Pharmacy College, Rajkot	51	33	18	64.71
264 Suryaben Jashubhai Thakkar Pharmacy College, Rajkot	29	16	13	55.17
281 Smt. C. R. Gardi School Of Pharmacy For Girls, Anandpar, Jamnagar	20	11	9	55.00
253 K. V. Virani Institute of Pharmacy And Research Centre, Badhada	29	15	14	51.72
237 R. K. College Of Pharmacy, Rajkot	38	19	19	50.00
284 Smt. R. B. Patel Mahila Pharmacy College, (Only For Girls), Atkot	20	10	10	50.00
210 Atmiya Institute Of Pharmacy, Rajkot	59	27	32	45.76
263 Smt. R. D. Gardi B. Pharmacy College, Nyara, Rajkot	31	12	19	38.71
266 V. B. Manvar Pharmacy College, Upleta	35	13	22	37.14
203 Akshar-Preet Institute Of Pharmacy, Jamnagar	20	6	14	30.00
249 S. S. Institute Of Pharmaceutical Education & Research, Hadala	10	3	7	30.00
250 Shree H. N. Shukla Institute Of Pharmaceutical Education & Research, Rajkot	33	9	24	27.27
269 Vivek Bharti Trust Pharmacy College, Junagadh	37	9	28	24.32
231 N. R. Vekaria Institute Of Pharmacy, Junagadh	17	4	13	23.53

**INSTITUTE WISE RESULT ZONE WISE**

234	Pharmacy College, Metoda	13	2	11	15.38
256	Shri Samanvay Institute Of Pharmacy, Botad	38	0	38	0.00

**INSTITUTE WISE RESULT ZONE WISE**

**SURAT**



<b>INST CODE / NAME</b>	<b>TOT AL</b>	<b>PASS</b>	<b>FAIL</b>	<b>PER</b>
230 Maliba Pharmacy College, Tarsadi	48	41	7	85.42
215 Bhagvan Mahavir Pharmacy College, Surat	52	39	13	75.00
265 Swaminarayan Pharmacy College, Salvav	53	36	17	67.92
259 Shree Swaminarayan Pharmacy College, Kevadia Colony	47	27	20	57.45
216 C. K. Pithawalla Institute Of Pharmaceutical Science Research, Surat	56	31	25	55.36
254 Shri Dhanvantary Pharmacy College, Kim	57	30	27	52.63
268 Vidhyabharti Trust College Of Pharmacy, Umrakh	53	27	26	50.94
239 Shri G.M.Bilakhia College Of Pharmacy, ROFEL, Vapi	26	13	13	50.00
274 Laxminarayan Dev College Of Pharmacy, Bholav, Bharuch	47	14	33	29.79